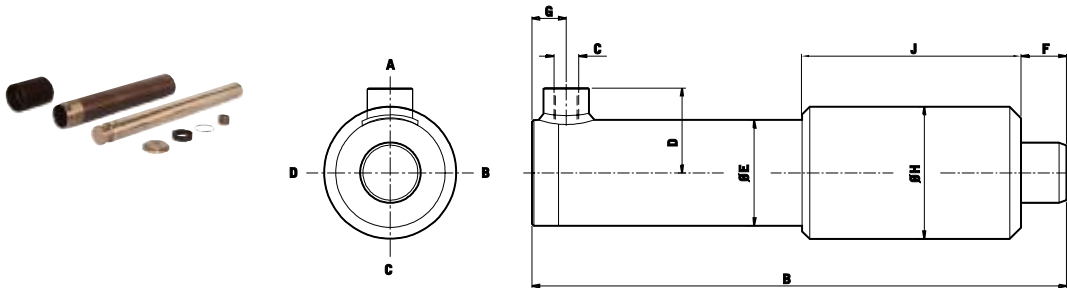


Cilinders 250 bar serie - zelfbouw

TYPE EPL

Enkelwerkende zelfbouwcilinder
Uitvoering Cronus



Borging
Constructie
Materiaal

Loctite
Gelast, kopmoer uit één geheel
- Buis St52,H10
- Stang: 20MnV6/C45, hardverchromd Ra 0,25
- Kopmoer: gietijzer
- Lasnippel: staal
- Geleiding kunststof

Montage

- Kort de cilinder buis en stang in op de gewenste lengte
- Reinig de delen
- Las de bodem en nippel aan de buis (electrode - RVS, lasdraad - MAGSI 14, TD MAK 10 of soortgelijk).
- Vet de geleidering en manchet / kopmoer in met olie, schuif de stang in de buis en draai vervolgens de kopmoer vast. Kopmoer borgen met loctite 243.

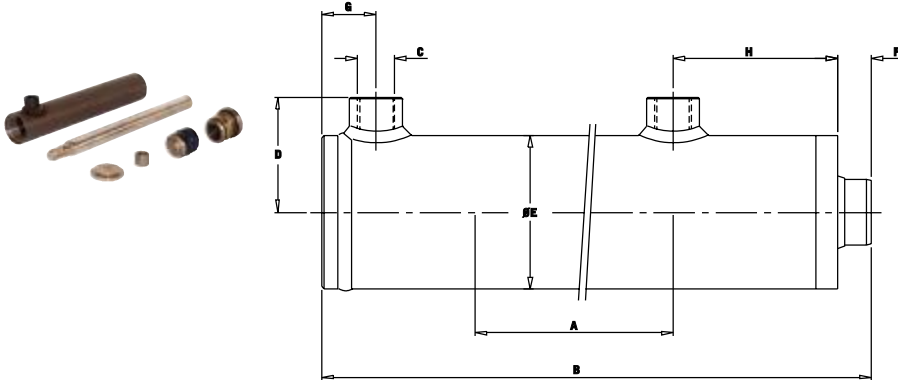
Werkdruk

250 Bar

STANG Ø (MM)	SLAG A (MM)	B (MM)	C	D (MM)	E (MM)	F (MM)	G (MM)	H (MM)	AFDICHTING	BESTELNUMMER
30	180	337	3/8" BSP	39,5	45	76	23	60	PC-25-30-000	EPL 30-180
30	280	437	3/8" BSP	39,5	45	76	23	60	PC-25-30-000	EPL 30-280
30	450	607	3/8" BSP	39,5	45	76	23	60	PC-25-30-000	EPL 30-450
40	180	335	3/8" BSP	44,5	55	56	25	70	PC25-40-000	EPL 40-180
40	280	435	3/8" BSP	44,5	55	56	25	70	PC25-40-000	EPL 40-280
40	450	605	3/8" BSP	44,5	55	56	25	70	PC25-40-000	EPL 40-450
50	340	507	3/8" BSP	49,5	65	56	26	80	PC25-50-000	EPL 50-340
50	440	607	3/8" BSP	49,5	65	56	26	80	PC25-50-000	EPL 50-440
50	580	864	3/8" BSP	49,5	65	173	26	80	PC25-50-000	EPL 50-580

Cilinders 250 bar serie - zelfbouw
TYPE D

Dubbelwerkende zelfbouwcilinders


Borging
Constructie
Materiaal

 Loctite
 Gelast, kopmoer uit één geheel
 - Buis: St52,H10
 - Stang: 20MnV6/C45, hardverchromd Ra 0,25
 - Kopmoer: staal met oppervlakte behandeling / gietijzer

Montage

 - Lasnippel: staal
 - Kort de cilinder buis en stang in op de gewens te lengte
 - Reinig de delen
 - Las de bodem en nippel aan de buis (electrode RVS, lasdraad - MAGSI 14, TD MAK 10 of soortgelijk).
 - Draai de zuiger op de stang. Borgen met Loctite 603. Vet de manchet en de kopmoer in met olie, schuif de stang in de buis, draai vervolgens de kopmoer vast. Kopmoer borgen met loctite 243.
 250 Bar

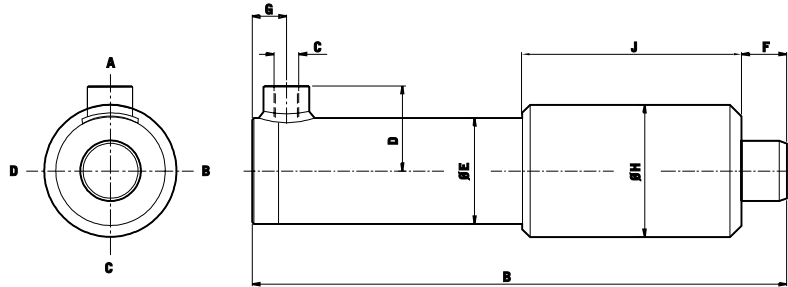
Werkdruk

BORING (MM)	STANG Ø (MM)	SLAG A (MM)	B (MM)	C	D (MM)	E (MM)	F (MM)	G (MM)	H (MM)	AFDICHTING	BESTELNUMMER
25	16	100	243	1/4" BSP	33,5	35	53	18	44	DC-25-16-25-000	D 16-25-100
25	16	200	343	1/4" BSP	33,5	35	53	18	44	DC-25-16-25-000	D 16-25-200
30	20	150	293	1/4" BSP	37	40	47	20	44	DC-25-20-30-000	D 20-30-150
30	20	300	443	1/4" BSP	37	40	47	20	44	DC-25-20-30-000	D 20-30-300
40	25	200	346	3/8" BSP	42	50	45	17	47	DC-25-25-40-000	D 25-40-200
40	25	450	596	3/8" BSP	42	50	45	17	47	DC-25-25-40-000	D 25-40-450
40	25	580	856	3/8" BSP	42	50	45	17	47	DC-25-25-40-000	D 25-40-580
50	30	350	506	3/8" BSP	47	60	47	19	53	DC-25-30-50-000	D 30-50-350
50	30	580	736	3/8" BSP	47	60	47	19	53	DC-25-30-50-000	D 30-50-580
60	35	450	610	3/8" BSP	52	70	39	24	58	DC-25-35-60-000	D 35-60-450
60	35	600	760	3/8" BSP	52	70	39	24	58	DC-25-35-60-000	D 35-60-600
70	35	500	676	3/8" BSP	57	80	53	21	60	DC-25-35-70-000	D 35-70-500
70	35	800	976	3/8" BSP	57	80	53	21	60	DC-25-35-70-000	D 35-70-800
70	40	500	666	3/8" BSP	57	80	43	21	60	DC-25-40-70-000	D 40-70-500
70	40	800	966	3/8" BSP	57	80	43	21	60	DC-25-40-70-000	D 40-70-800
80	50	500	688	1/2" BSP	64	90	47	25	68	DC-25-50-80-000	D 50-80-500
80	50	800	988	1/2" BSP	64	90	47	25	68	DC-25-50-80-000	D 50-80-800
90	55	500	693	1/2" BSP	70,5	105	37	28	75	DC-25-55-90-000	D 55-90-500
90	55	800	993	1/2" BSP	70,5	105	37	28	75	DC-25-55-90-000	D 55-90-800
100	60	500	711	1/2" BSP	75,5	115	49	28	81	DC-32-60-100-000	D 60-100-500
100	60	800	1011	1/2" BSP	75,5	115	49	28	81	DC-32-60-100-000	D 60-100-800

Cilinders 250 bar serie - compleet

TYPE EPL-C

Enkelwerkende plunjer cilinder compleet
Uitvoering Cronus



Borging
Constructie
Materiaal

- Loctite
Gelast, kopmoer uit één geheel
- Buis: St52,H10
 - Stang: 20MnV6/C45, hardverchromd Ra 0,25
 - Kopmoer: gietijzer
 - lasnippel: staal
 - Geleiding: kunststof

Werkdruk

250 Bar

STANG Ø (MM)	SLAG A (MM)	B (MM)	C	D (MM)	E (MM)	F (MM)	G (MM)	H (MM)	AFDICHTING	BESTELNUMMER
30	200	316	3/8" BSP	39,5	45	35	23	60	PC-25-30-000	EPL 30-200C
30	250	366	3/8" BSP	39,5	45	35	23	60	PC-25-30-000	EPL 30-250C
30	300	416	3/8" BSP	39,5	45	35	23	60	PC-25-30-000	EPL 30-300C
30	350	466	3/8" BSP	39,5	45	35	23	60	PC-25-30-000	EPL 30-350C
30	400	516	3/8" BSP	39,5	45	35	23	60	PC-25-30-000	EPL 30-400C
30	500	616	3/8" BSP	39,5	45	35	23	60	PC-25-30-000	EPL 30-500C
40	200	339	3/8" BSP	44,5	55	40	25	70	PC25-40-000	EPL 40-200C
40	250	389	3/8" BSP	44,5	55	40	25	70	PC25-40-000	EPL 40-250C
40	300	439	3/8" BSP	44,5	55	40	25	70	PC25-40-000	EPL 40-300C
40	350	489	3/8" BSP	44,5	55	40	25	70	PC25-40-000	EPL 40-350C
40	400	539	3/8" BSP	44,5	55	40	25	70	PC25-40-000	EPL 40-400C
40	500	639	3/8" BSP	44,5	55	40	25	70	PC25-40-000	EPL 40-500C
50	300	456	3/8" BSP	49,5	65	45	26	80	PC25-50-000	EPL 50-300C
50	400	556	3/8" BSP	49,5	65	45	26	80	PC25-50-000	EPL 50-400C
50	500	656	3/8" BSP	49,5	65	45	26	80	PC25-50-000	EPL 50-500C
50	600	756	3/8" BSP	49,5	65	45	26	80	PC25-50-000	EPL 50-600C
60	300	470	3/8" BSP	54,5	75	50	27	90	PC-25-60-000	EPL 60-300C
60	400	570	3/8" BSP	54,5	75	50	27	90	PC-25-60-000	EPL 60-400C
60	500	670	3/8" BSP	54,5	75	50	27	90	PC-25-60-000	EPL 60-500C
60	600	770	3/8" BSP	54,5	75	50	27	90	PC-25-60-000	EPL 60-600C

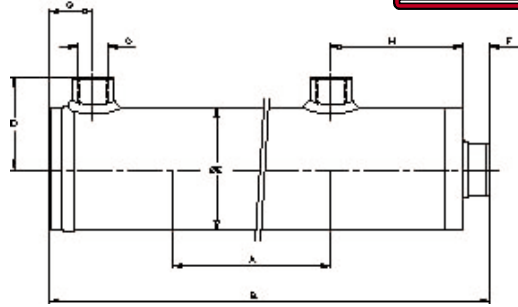




Cilinders 250 bar serie - compleet

TYPE D-C

Dubbelwerkende cilinder compleet



Borging
Constructie
Materiaal

Loctite
Gelast, kopmoer en zuiger uit één geheel
- Buis: St52,H10
- Stang: 20MnV6/C45, hardverchromd Ra 0,25
- Kopmoer: gietijzer
- Lasnippel: staal

Werkdruk

250 Bar

BORING (MM)	STANG Ø (MM)	SLAG A (MM)	B (MM)	C	D (MM)	E (MM)	F (MM)	G (MM)	H (MM)	AFDICHTING	BESTELNUMMER
25	16	100	230	1/4" BSP	33,5	35	40	18	44	DC-25-16-25-000	D 16-25-100C
25	16	125	255	1/4" BSP	33,5	35	40	18	44	DC-25-16-25-000	D 16-25-125C
25	16	150	280	1/4" BSP	33,5	35	40	18	44	DC-25-16-25-000	D 16-25-150C
25	16	175	305	1/4" BSP	33,5	35	40	18	44	DC-25-16-25-000	D 16-25-175C
25	16	200	330	1/4" BSP	33,5	35	40	18	44	DC-25-16-25-000	D 16-25-200C
25	16	250	380	1/4" BSP	33,5	35	40	18	44	DC-25-16-25-000	D 16-25-250C
30	20	100	236	1/4" BSP	37	40	40	20	44	DC-25-20-30-000	D 20-30-100C
30	20	125	261	1/4" BSP	37	40	40	20	44	DC-25-20-30-000	D 20-30-125C
30	20	150	286	1/4" BSP	37	40	40	20	44	DC-25-20-30-000	D 20-30-150C
30	20	175	311	1/4" BSP	37	40	40	20	44	DC-25-20-30-000	D 20-30-175C
30	20	200	336	1/4" BSP	37	40	40	20	44	DC-25-20-30-000	D 20-30-200C
30	20	250	386	1/4" BSP	37	40	40	20	44	DC-25-20-30-000	D 20-30-250C
30	20	300	436	1/4" BSP	37	40	40	20	44	DC-25-20-30-000	D 20-30-300C
30	20	350	486	1/4" BSP	37	40	40	20	44	DC-25-20-30-000	D 20-30-350C
40	25	100	246	3/8" BSP	42	50	45	17	47	DC-25-25-40-000	D 25-40-100C
40	25	125	271	3/8" BSP	42	50	45	17	47	DC-25-25-40-000	D 25-40-125C
40	25	150	296	3/8" BSP	42	50	45	17	47	DC-25-25-40-000	D 25-40-150C
40	25	175	321	3/8" BSP	42	50	45	17	47	DC-25-25-40-000	D 25-40-175C
40	25	200	346	3/8" BSP	42	50	45	17	47	DC-25-25-40-000	D 25-40-200C
40	25	250	396	3/8" BSP	42	50	45	17	47	DC-25-25-40-000	D 25-40-250C
40	25	300	446	3/8" BSP	42	50	45	17	47	DC-25-25-40-000	D 25-40-300C
40	25	350	496	3/8" BSP	42	50	45	17	47	DC-25-25-40-000	D 25-40-350C
40	25	400	546	3/8" BSP	42	50	45	17	47	DC-25-25-40-000	D 25-40-400C
40	25	450	596	3/8" BSP	42	50	45	17	47	DC-25-25-40-000	D 25-40-450C
40	25	500	646	3/8" BSP	42	50	45	17	47	DC-25-25-40-000	D 25-40-500C
40	25	550	696	3/8" BSP	42	50	45	17	47	DC-25-25-40-000	D 25-40-550C
40	25	600	746	3/8" BSP	42	50	45	17	47	DC-25-25-40-000	D 25-40-600C
50	25	100	256	3/8" BSP	47	60	47	19	53	DC-25-25-50-000	D 25-50-100C
50	25	125	281	3/8" BSP	47	60	47	19	53	DC-25-25-50-000	D 25-50-125C
50	25	150	306	3/8" BSP	47	60	47	19	53	DC-25-25-50-000	D 25-50-150C
50	25	175	331	3/8" BSP	47	60	47	19	53	DC-25-25-50-000	D 25-50-175C
50	25	200	356	3/8" BSP	47	60	47	19	53	DC-25-25-50-000	D 25-50-200C
50	25	250	406	3/8" BSP	47	60	47	19	53	DC-25-25-50-000	D 25-50-250C
50	25	300	456	3/8" BSP	47	60	47	19	53	DC-25-25-50-000	D 25-50-300C
50	25	350	506	3/8" BSP	47	60	47	19	53	DC-25-25-50-000	D 25-50-350C
50	25	400	556	3/8" BSP	47	60	47	19	53	DC-25-25-50-000	D 25-50-400C
50	25	450	606	3/8" BSP	47	60	47	19	53	DC-25-25-50-000	D 25-50-450C
50	25	500	656	3/8" BSP	47	60	47	19	53	DC-25-25-50-000	D 25-50-500C
50	25	550	706	3/8" BSP	47	60	47	19	53	DC-25-25-50-000	D 25-50-550C
50	25	600	756	3/8" BSP	47	60	47	19	53	DC-25-25-50-000	D 25-50-600C
50	30	100	256	3/8" BSP	47	60	47	19	53	DC-25-30-50-000	D 30-50-100C
50	30	125	281	3/8" BSP	47	60	47	19	53	DC-25-30-50-000	D 30-50-125C
50	30	150	306	3/8" BSP	47	60	47	19	53	DC-25-30-50-000	D 30-50-150C
50	30	175	331	3/8" BSP	47	60	47	19	53	DC-25-30-50-000	D 30-50-175C
50	30	200	356	3/8" BSP	47	60	47	19	53	DC-25-30-50-000	D 30-50-200C
50	30	250	406	3/8" BSP	47	60	47	19	53	DC-25-30-50-000	D 30-50-250C



Cilinders 250 bar serie - compleet

TYPE D-C

Dubbelwerkende cilinder compleet



BORING (MM)	STANG Ø (MM)	SLAG A (MM)	B (MM)	C	D (MM)	E (MM)	F (MM)	G (MM)	H (MM)	AFDICHTING	BESTELNUMMER
50	30	300	456	3/8" BSP	47	60	47	19	53	DC-25-30-50-000	D 30-50-300C
50	30	350	506	3/8" BSP	47	60	47	19	53	DC-25-30-50-000	D 30-50-350C
50	30	400	556	3/8" BSP	47	60	47	19	53	DC-25-30-50-000	D 30-50-400C
50	30	450	606	3/8" BSP	47	60	47	19	53	DC-25-30-50-000	D 30-50-450C
50	30	500	656	3/8" BSP	47	60	47	19	53	DC-25-30-50-000	D 30-50-500C
50	30	600	756	3/8" BSP	47	60	47	19	53	DC-25-30-50-000	D 30-50-600C
50	30	800	956	3/8" BSP	47	60	47	19	53	DC-25-30-50-000	D 30-50-800C
50	30	1000	1156	3/8" BSP	47	60	47	19	53	DC-25-30-50-000	D 30-50-1000C
60	30	100	260	3/8" BSP	52	70	39	24	58	DC-25-30-60-000	D 30-60-100C
60	30	125	285	3/8" BSP	52	70	39	24	58	DC-25-30-60-000	D 30-60-125C
60	30	150	310	3/8" BSP	52	70	39	24	58	DC-25-30-60-000	D 30-60-150C
60	30	175	335	3/8" BSP	52	70	39	24	58	DC-25-30-60-000	D 30-60-175C
60	30	200	360	3/8" BSP	52	70	39	24	58	DC-25-30-60-000	D 30-60-200C
60	30	250	410	3/8" BSP	52	70	39	24	58	DC-25-30-60-000	D 30-60-250C
60	30	300	460	3/8" BSP	52	70	39	24	58	DC-25-30-60-000	D 30-60-300C
60	30	350	510	3/8" BSP	52	70	39	24	58	DC-25-30-60-000	D 30-60-350C
60	30	400	560	3/8" BSP	52	70	39	24	58	DC-25-30-60-000	D 30-60-400C
60	30	450	610	3/8" BSP	52	70	39	24	58	DC-25-30-60-000	D 30-60-450C
60	30	500	660	3/8" BSP	52	70	39	24	58	DC-25-30-60-000	D 30-60-500C
60	30	600	760	3/8" BSP	52	70	39	24	58	DC-25-30-60-000	D 30-60-600C
60	30	800	960	3/8" BSP	52	70	39	24	58	DC-25-30-60-000	D 30-60-800C
60	30	1000	1160	3/8" BSP	52	70	39	24	58	DC-25-30-60-000	D 30-60-1000C
60	35	100	260	3/8" BSP	52	70	39	24	58	DC-25-35-60-000	D 35-60-100C
60	35	125	285	3/8" BSP	52	70	39	24	58	DC-25-35-60-000	D 35-60-125C
60	35	150	310	3/8" BSP	52	70	39	24	58	DC-25-35-60-000	D 35-60-150C
60	35	175	335	3/8" BSP	52	70	39	24	58	DC-25-35-60-000	D 35-60-175C
60	35	200	360	3/8" BSP	52	70	39	24	58	DC-25-35-60-000	D 35-60-200C
60	35	250	410	3/8" BSP	52	70	39	24	58	DC-25-35-60-000	D 35-60-250C
60	35	300	460	3/8" BSP	52	70	39	24	58	DC-25-35-60-000	D 35-60-300C
60	35	350	510	3/8" BSP	52	70	39	24	58	DC-25-35-60-000	D 35-60-350C
60	35	400	560	3/8" BSP	52	70	39	24	58	DC-25-35-60-000	D 35-60-400C
60	35	450	610	3/8" BSP	52	70	39	24	58	DC-25-35-60-000	D 35-60-450C
60	35	500	660	3/8" BSP	52	70	39	24	58	DC-25-35-60-000	D 35-60-500C
60	35	600	760	3/8" BSP	52	70	39	24	58	DC-25-35-60-000	D 35-60-600C
60	35	800	960	3/8" BSP	52	70	39	24	58	DC-25-35-60-000	D 35-60-800C
60	35	1000	1160	3/8" BSP	52	70	39	24	58	DC-25-35-60-000	D 35-60-1000C
70	35	100	276	3/8" BSP	57	80	53	21	60	DC-25-35-70-000	D 35-70-100C
70	35	125	301	3/8" BSP	57	80	53	21	60	DC-25-35-70-000	D 35-70-125C
70	35	150	326	3/8" BSP	57	80	53	21	60	DC-25-35-70-000	D 35-70-150C
70	35	175	351	3/8" BSP	57	80	53	21	60	DC-25-35-70-000	D 35-70-175C
70	35	200	376	3/8" BSP	57	80	53	21	60	DC-25-35-70-000	D 35-70-200C
70	35	250	426	3/8" BSP	57	80	53	21	60	DC-25-35-70-000	D 35-70-250C
70	35	300	476	3/8" BSP	57	80	53	21	60	DC-25-35-70-000	D 35-70-300C
70	35	350	526	3/8" BSP	57	80	53	21	60	DC-25-35-70-000	D 35-70-350C
70	35	400	576	3/8" BSP	57	80	53	21	60	DC-25-35-70-000	D 35-70-400C
70	35	450	626	3/8" BSP	57	80	53	21	60	DC-25-35-70-000	D 35-70-450C
70	35	500	676	3/8" BSP	57	80	53	21	60	DC-25-35-70-000	D 35-70-500C
70	35	600	776	3/8" BSP	57	80	53	21	60	DC-25-35-70-000	D 35-70-600C
70	35	800	976	3/8" BSP	57	80	53	21	60	DC-25-35-70-000	D 35-70-800C
70	35	1000	1176	3/8" BSP	57	80	53	21	60	DC-25-35-70-000	D 35-70-1000C
80	45	100	291	1/2" BSP	64	90	50	25	68	DC-25-45-80-000	D 45-80-100C
80	45	125	316	1/2" BSP	64	90	50	25	68	DC-25-45-80-000	D 45-80-125C
80	45	150	341	1/2" BSP	64	90	50	25	68	DC-25-45-80-000	D 45-80-150C
80	45	175	366	1/2" BSP	64	90	50	25	68	DC-25-45-80-000	D 45-80-175C
80	45	200	391	1/2" BSP	64	90	50	25	68	DC-25-45-80-000	D 45-80-200C
80	45	250	441	1/2" BSP	64	90	50	25	68	DC-25-45-80-000	D 45-80-250C
80	45	300	491	1/2" BSP	64	90	50	25	68	DC-25-45-80-000	D 45-80-300C
80	45	350	541	1/2" BSP	64	90	50	25	68	DC-25-45-80-000	D 45-80-350C
80	45	400	591	1/2" BSP	64	90	50	25	68	DC-25-45-80-000	D 45-80-400C
80	45	450	641	1/2" BSP	64	90	50	25	68	DC-25-45-80-000	D 45-80-450C
80	45	500	691	1/2" BSP	64	90	50	25	68	DC-25-45-80-000	D 45-80-500C
80	45	600	791	1/2" BSP	64	90	50	25	68	DC-25-45-80-000	D 45-80-600C
80	45	800	991	1/2" BSP	64	90	50	25	68	DC-25-45-80-000	D 45-80-800C
80	45	1000	1191	1/2" BSP	64	90	50	25	68	DC-25-45-80-000	D 45-80-1000C